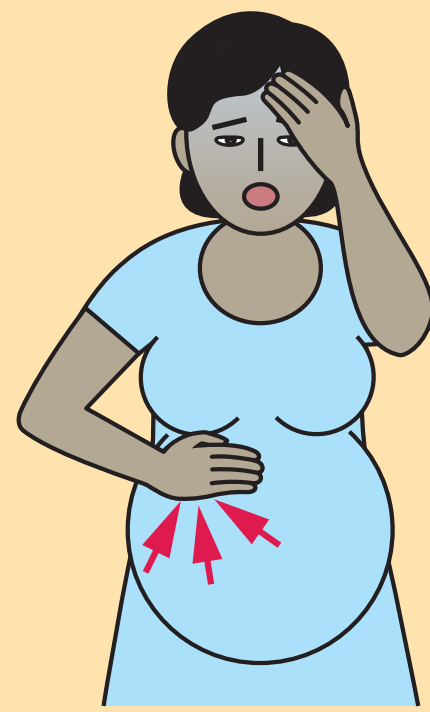


Helping Mothers and Babies Survive Pre-Eclampsia & Eclampsia

ACTION PLAN 2 - ADVANCED CARE

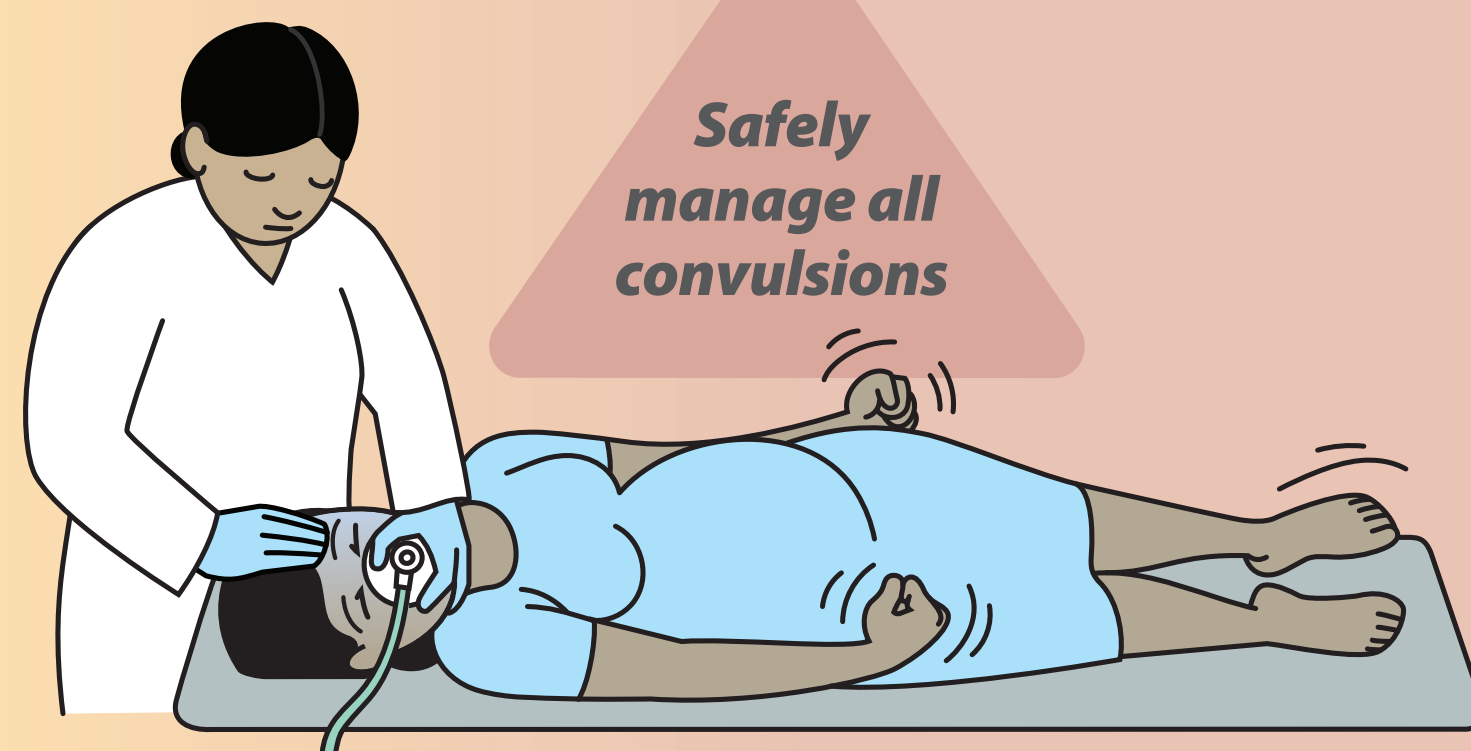
SEVERE PRE-ECLAMPSIA

Pre-Eclampsia and
One or More Danger Signs



ECLAMPSIA

Convulsions or Unconscious



Safely
manage all
convulsions

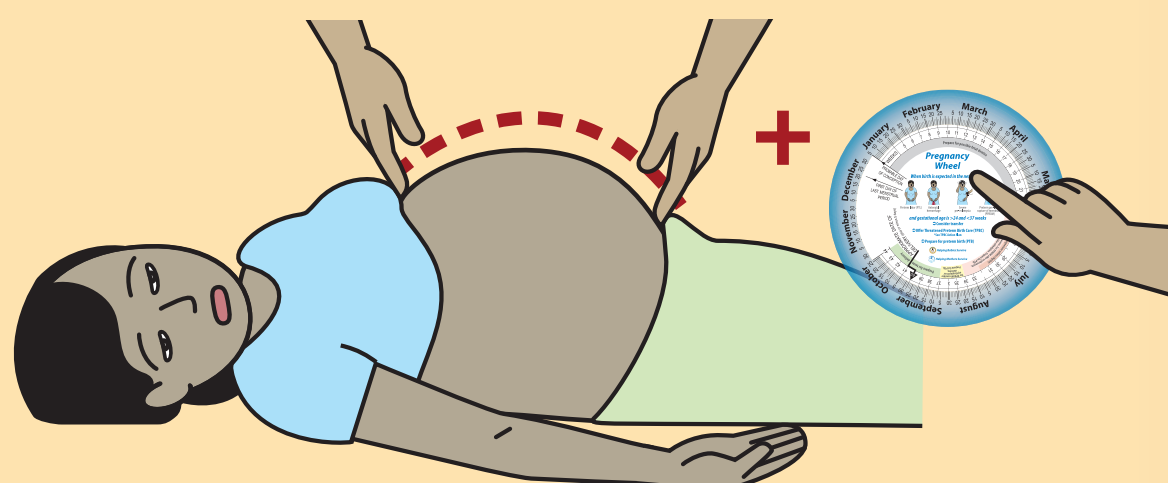
Receive referral OR Continue care

Begin OR Continue MgSO₄

**Begin OR Continue medication
to reduce severe BP**

**Continue close monitoring
of woman and fetus**

**If no convulsions and
conscious**



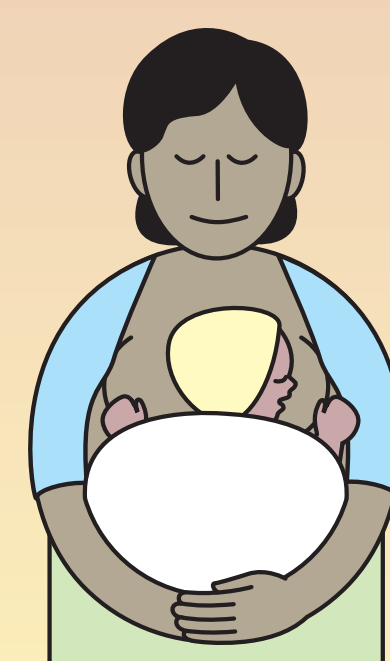
Confirm Gestational Age

**If convulsions or
unconscious**

Deliver

Continue MgSO₄
for 24 hours after birth
or last convulsion

**Continue medication
to reduce severe BP**



**Provide essential
maternal and
newborn care**

**Continue to monitor
after birth**

Pre-viable

**Within
24 hours**

End pregnancy

Continue MgSO₄
for 24 hours after birth
or last convulsion

**Continue
monitoring**

Viable to < 34 weeks



**Give
dexamethasone**

**Admit woman and
monitor closely:**

- Convulsions
- Uncontrolled severe hypertension
- Worsening maternal condition (danger signs, exam, lab tests)
- Worsening fetal condition or demise
- Reaches 37 weeks 0 days

**≥ 34 week to
< 37 weeks**

**Within
24 hours**

> 37 weeks

**Within
4 hours**

**Within
12 hours**

Yes to any