

Training Partnership Initiative

Wilma Doedens, Nguyen-Toan Tran, Kristen Harker
Inter-agency Working Group for Reproductive Health in Crises
Women's Refugee Commission

Training Partnership Initiative

Wilma Doedens, Nguyen-Toan Tran, Kristen Harker
Inter-agency Working Group for Reproductive Health in Crises
Women's Refugee Commission

Training Partnership



- **Scarcity of trainers**
- **Updating, dissemination and promotion of training materials**
- **Lack of sustainable financial resources to implement training**
- **Keeping track of trainers/trainees**

Aim: Local capacity development

- To establish **partnerships** between the IAWG and **training institutions from crisis-prone countries**
- to assure **quality training on RH** in emergency preparedness and response on a regular and sustainable basis.
- To effectively **increase the local and regional capacity** to effectively coordinate and deliver quality RH care **from the beginning of a crisis response**

Training Partnership



- **Information exchange**
- **Resource development**
- **Capacity building**
- **Coordination**

- Scarcity of trainers
- Updating, dissemination and promotion of training materials
- Lack of sustainable financial resources to implement training
- Keeping track of trainers/trainees

Training Partnership

- Information sharing platform
- Training resource development
- Operational research



- Information exchange
- Resource development
- Capacity building
- Coordination

- Scarcity of trainers
- Updating, dissemination and promotion of training materials
- Lack of sustainable financial resources to implement training
- Keeping track of trainers/trainees

Sharing training resources and information

- Member area
 - Resources, forum, archives
- News
- Partner institutes
- Training
 - Calendar
 - IAWG inventory
 - Roster mechanism

www.iawg.net/tpi-home

The screenshot shows the homepage of the IAWG Training Partnership. At the top, there is a navigation bar with the IAWG logo and the text "INTERNATIONAL ASSOCIATION OF WOMEN'S GROUPS FOR REPRODUCTIVE HEALTH IN EMERGENCIES". The main navigation menu includes "ABOUT", "MEMBERS", "SUB WORKING GROUPS", "REGIONAL IAWGS", and "RESOURCES". A secondary navigation bar below the main menu includes "Home", "Training", and "Partnership".

The main content area features a large image of a woman holding a baby, with the text "Training PARTNERSHIP" and the tagline "Strengthening access to and quality of reproductive health services in humanitarian settings". Below this is a "REGISTER LOGIN" button.

On the right side, there is a "Calendar of Trainings" for March 2016, showing a calendar grid with a highlighted date of the 7th. Below the calendar is a "REGISTRATION ON UPCOMING WORKSHOPS" section with a photo of a baby and the text "Together for safe births in crises".

The left side of the page has a "Training Partnership" section with a sub-header "All the IAWG Training Partnership hubs, you can find news, training resources, a member news with a discussion forum, and much more. Please contact us with any questions." Below this is a "News" section with a photo of a workshop and the headline "IAWG SURGE Capacity Initiative trains expert sexual and reproductive health coordinators".



Training

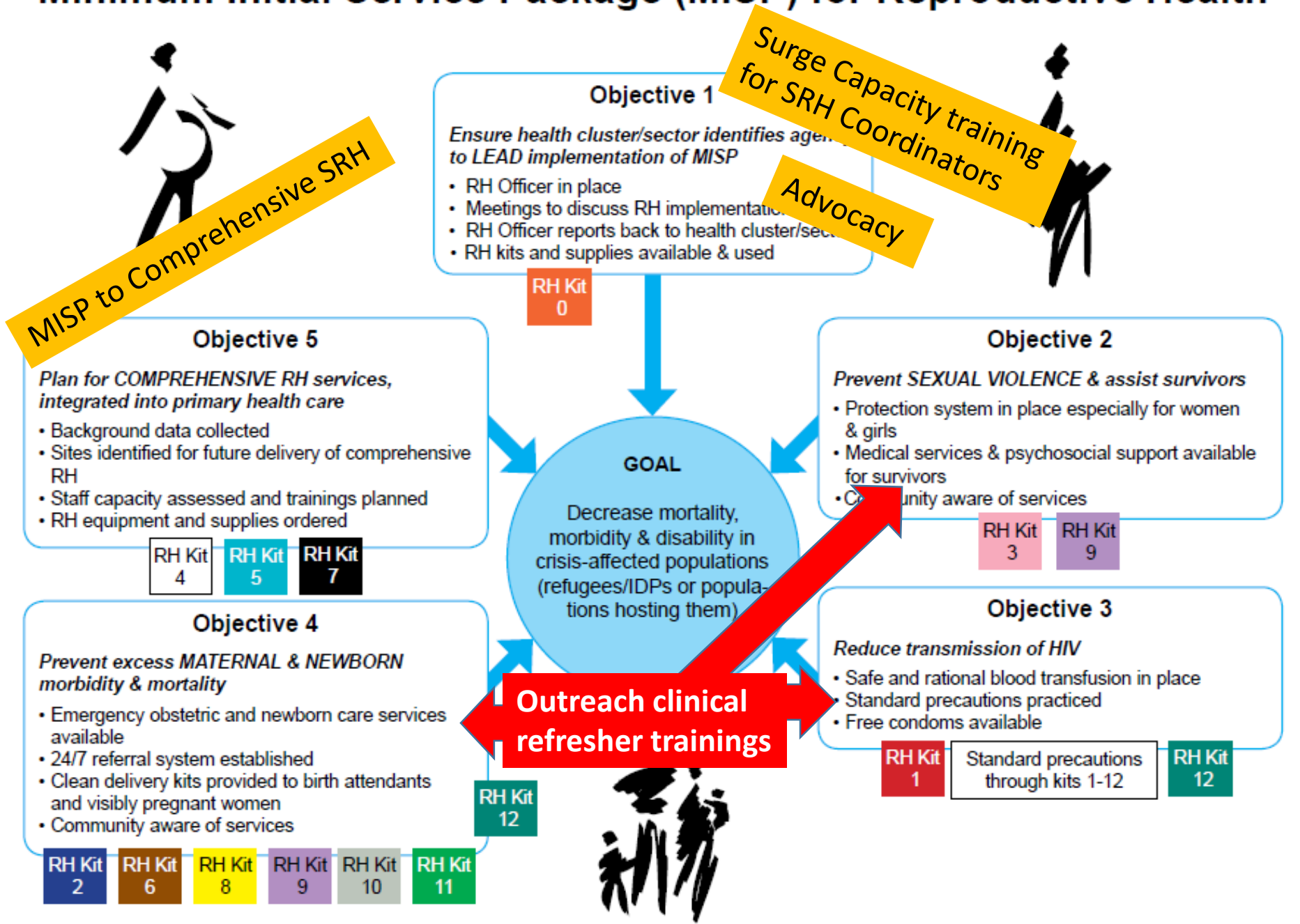
Learn more about the IAWG Training Partnership, access a list of available training resources within the IAWG network and check out the map of the IAWG Training network.



Partners

The IAWG-TP's partners with complementary expertise contribute to evidence-based research and training resources for women and reproductive health needs in emergencies. Learn more.

Minimum Initial Service Package (MISP) for Reproductive Health

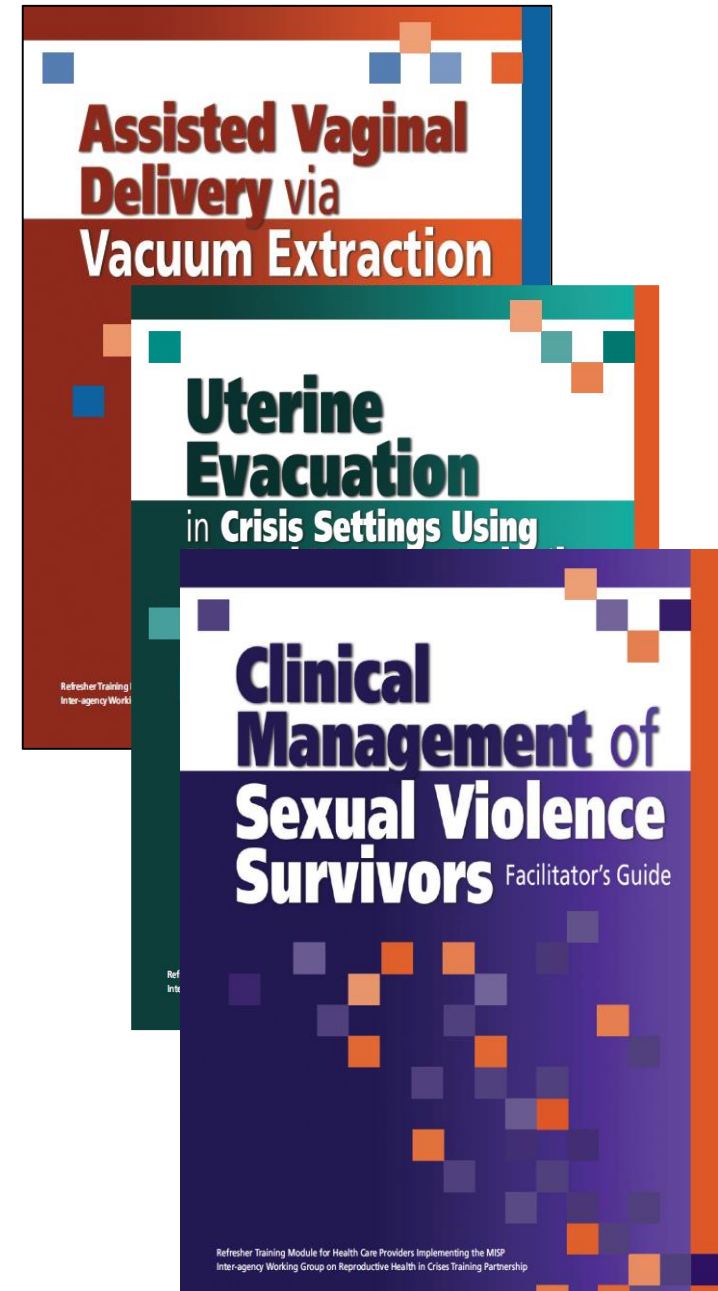


SURGE Capacity

- Training SRH coordinators as part of SURGE emergency response
- Modeled after GENCAP
- SRHCAP roster managed by NORCAP
- 5-day training on skills to coordinate the implementation of the MISP for SRH coordinators

Clinical Refresher Trainings

- Clinical refresher modules
 - Objectives 2, 3 and 4 of the MISP
 - Competency-based
 - For health-care providers with a baseline of skills
 - Delivered through **outreach**
- Planned:
 - Standard precautions
 - BEmONC



Operational Research

- Clinical refresher trainings → at individual level
 - OR: In the next 3 – 6 months.

- (MISP to CSRH) → at institutional/systemic level
 - OR: if funding is secured.

Overall operational research approach

- Why OR ?
 - To help the decision making process of policy-makers and program managers
- OR goal
 - To contribute to strengthening access to and quality of life-saving SRH services in humanitarian settings.
- OR Hypothesis for field-based refresher training courses
 - Field-based and locally-owned capacity development strategies, such as clinical refresher training courses, can contribute to strengthening the competencies of health staff working in humanitarian settings.
- Specific OR objective
 - Through participatory approaches, to explore enablers and barriers related to the implementation of the capacity building approaches of the IAWG-TP.

Where?

In selected countries of sub-Saharan Africa and Asia where implementing clinical and research partners have been identified for the clinical refresher training courses.

- Institut Africain pour le Sante Publique, Burkina Faso
- Juba College of Nursing and Midwifery supported by IMC, South Sudan
- Family Planning Association of Nepal

Thank you!

IAWG web site: www.iawg.net/tpi-home

Email: kristenh@wrcommission.org