

Interim Care Centers, The Role of Local Partners

Jessica Izquierdo, MPH
Technical Advisor, Youth Programs



Presenter Disclosures

Jessica Izquierdo

- (1) The following personal financial relationships with commercial interests relevant to this presentation existed during the past 12 months:**

No relationships to disclose

Overview

- About ChildFund International
- Overview ChildFund Role in EVD Response
- Interim Care Centers
- Key lessons

Who is ChildFund?

- ChildFund International is part of the ChildFund Alliance, which includes 13 member organizations
- Together, the Alliance serves over 15 million children– and their families– in 58 countries

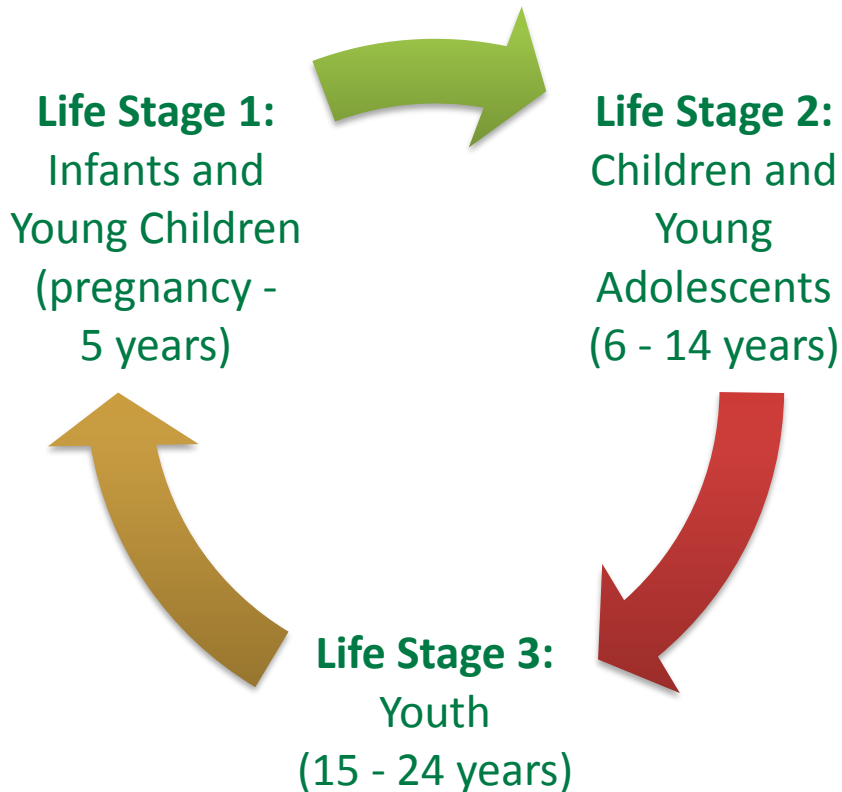
Our mission

To help deprived, excluded, and vulnerable children have the capacity to improve their lives and the opportunity to become young adults, parents, and leaders who bring lasting and positive change in their communities.

How we work

- We support local partners to create child-focused, community-based programs that are sustainable and contribute to achieving equity
- We apply a framework of evidence-informed strategies that address the interconnected elements of change needed for a child's development and well-being
- Our programs are supported through child sponsorship funds, as well as by institutional, corporate, and individual donors

How we work



- We work across three **life stages**, from conception through young adulthood
- Each life stage has a **theory of change**, which addresses key domains and pathways that contribute to change
- We promote the roles of parents and caregivers, children, communities, and societies in supporting children in each life stage and during critical transitions

ChildFund's Presence in West Africa

ChildFund operates in all three of the most affected countries:

Guinea since 2005

Liberia since 2003

Sierra Leone since 1985

As well as Senegal since 1985 ,

The Gambia since 1984 ,

Burkina Faso since 1996,

Benin since 1999,

Mali since 1989,

Togo since 1984, Benin and Mali



ChildFund's Emergency Response Strategy to EVD

- **Phase 1:** Community Awareness and Hygiene thru June 2014
- **Phase 2:** Scaled Up Social Mobilization thru September 2014
- **Phase 3:** Vulnerable Children Emergency Care and Psychosocial Support thru March 2015
- **Phase 4:** Community Health and Child Protection thru March 2016

Interim Care Centers

On October 6, in partnership with the Ministry of Health and Social Welfare (MOHSW), ChildFund opened the first dedicated **Kelekula interim care center** for children in Liberia



ICC: Goal

Ensure that children who are asymptomatic for Ebola Virus Disease but at high risk will be monitored for Ebola symptoms and referred for early health intervention if they become symptomatic, and will also be protected from neglect or stigmatization through short-term interventions at Interim Care Centers, leading to their safe return to a supportive family situation

ICC: Core activities to improve access, equity, and sustainability

- **Expand** the number of ICC's
- **Collect** child referrals to ICC and provide case management
- **Monitor** status of children entering the ICCs whose exposure to EVD infection is unknown or suspected
- **Train** nurses and community health volunteers to staff ICCs, inclusive of hygiene protocols, PSS and protection
- **Pilot** new SMS IDTR tracking system
- **Train, deploy, supervise** Community Health Workers to educate and communicate behavior change messages to communities surrounding the ICCs to reduce EBV stigma

ICC: Integrating ASRH

- **Feminine Hygiene Education and Provisions**
- **Sex education, Counseling and Condoms**
- **Protection from Sexual and Gender-based violence**



ICC: Reinventing



Summary: Key lessons

- **Funding flexibility** - mobilize rapidly and divert sponsorship funds to emergent issues
- **Preexisting partnerships** – build out existing ministry relations and community-led development efforts
- **Capacity-building Continuum** – preparedness and response efforts extend to recovery investments

Acknowledgements

- ChildFund teams in Guinea, Sierra Leone and Liberia and local partners
- Support by DFID, OFDA, UNICEF, corporations and individual donors
- And all of the local partner staff, program managers, CHWs, and volunteers who support these efforts, day in and day out

Thank you

Jessica Izquierdo
jizquierdo@childfund.org

www.childfund.org